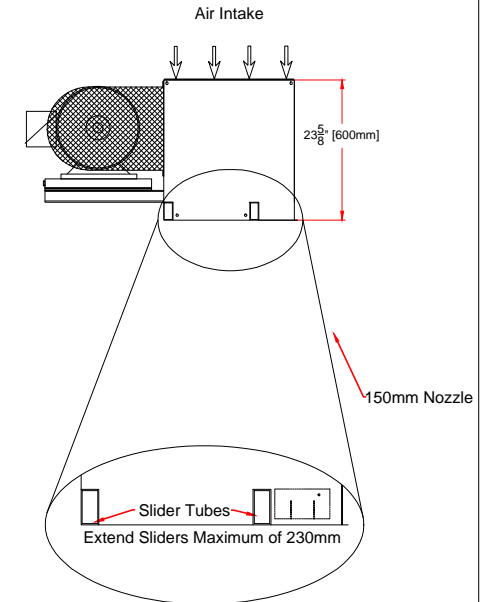
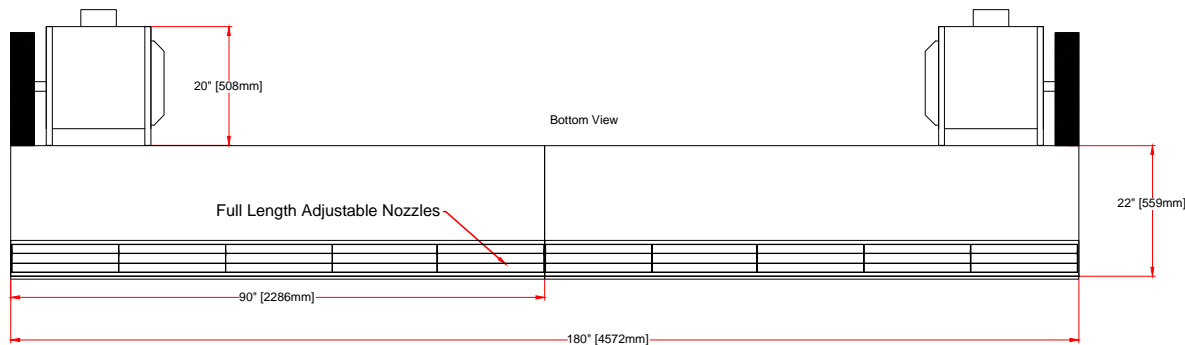
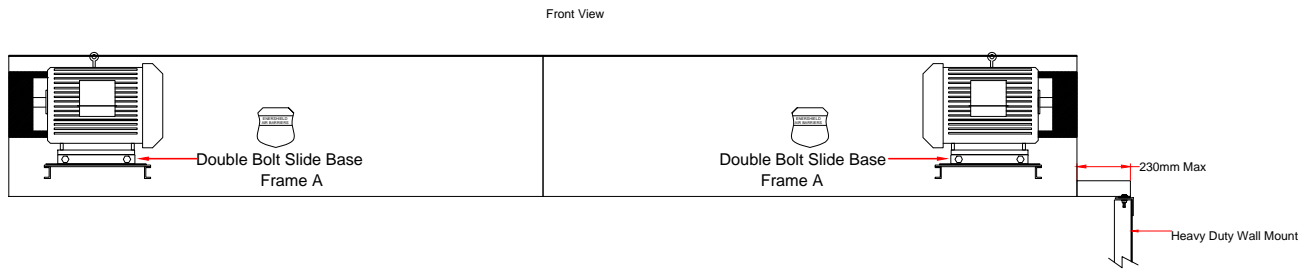
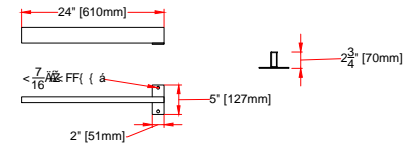


EXTENDABLE SLIDERS
4 PROVIDED



CE Certified

2 Heavy Duty Wall Mounts Provided

ENERSHIELD EUROPE

Calderhead Road

Shotts, Lanarkshire, Scotland

Tel.+44(0)1501 826501 FAX+44(0)1501 826501

E-mail: enquiries@enershield.eu

www.enershield.eu

ENERSHIELD AIR BARRIER

VOLTAGE
400/690V 3phase 50 Hz

Motor (s) IE2
2 @ 11kW total
21.2/12.3 amps FLA per motor
42.4/24.6 amps FLA total

Blowers

6

Xtremeshield

XS-180

Air Velocity (fpm) (m/s)

7500/38.1

Air Volume (cfm) (l/s)

35,786/16,869

Total kW

22

Weight lbs/Kg

1420 / 644