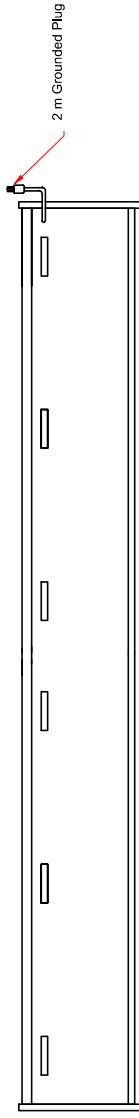
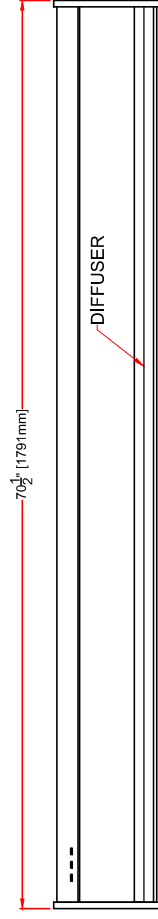


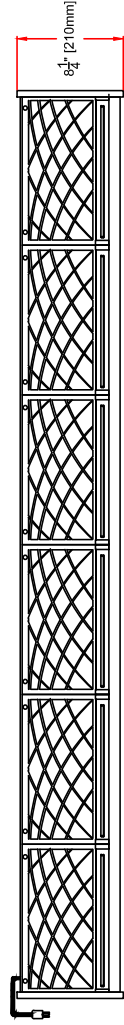
Wall mount can be fixed directly to wall, or may be secured to the extension brackets to extend Barrier off the wall.



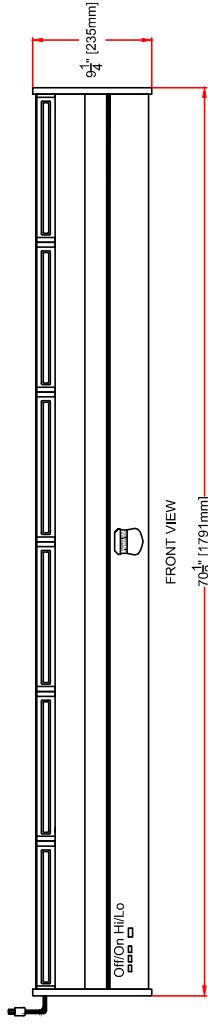
BACK VIEW



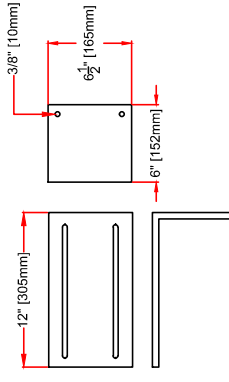
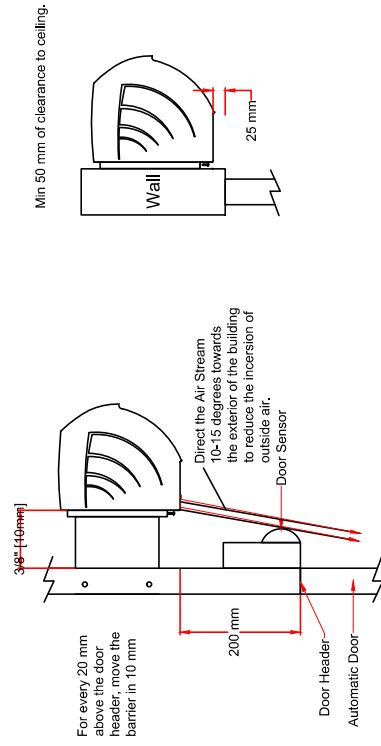
BOTTOM VIEW



TOP VIEW



FRONT VIEW



EXTENSION BRACKET 2 PER UNIT
See Owners Manual for Details

CE CERTIFIED

ENERSHIELD EUROPE
Calderhead Road
Shotts Lanarkshire Scotland
Tel: +44(0)1501 826501 FAX: +44(0)1501 826501
E-mail: enquiries@enershield.eu
www.enershield.eu

AVAILABLE IN WHITE, BLACK AND ALUMINUM FINISH

VOLTAGE 230V/1/50 Hz
2 Speed Motors TEAO
3 @ 0.15 kW = (0.45 kW total)
Total FLA = 5.25 amps

Designed for optimal efficiency at 2133mm with balanced building pressure. Consult dealer for varying applications.

Remote Operable

MICROSHIELD MCS-72

Air Velocity (fpm) (m/s) 3150-2560/16.0-13
Air Volume (cfm) (l/s) 1340-1060/632-500
Total kW/watts 0.45/447W
Weight lbs/Kg 57.2 lbs/26 Kg