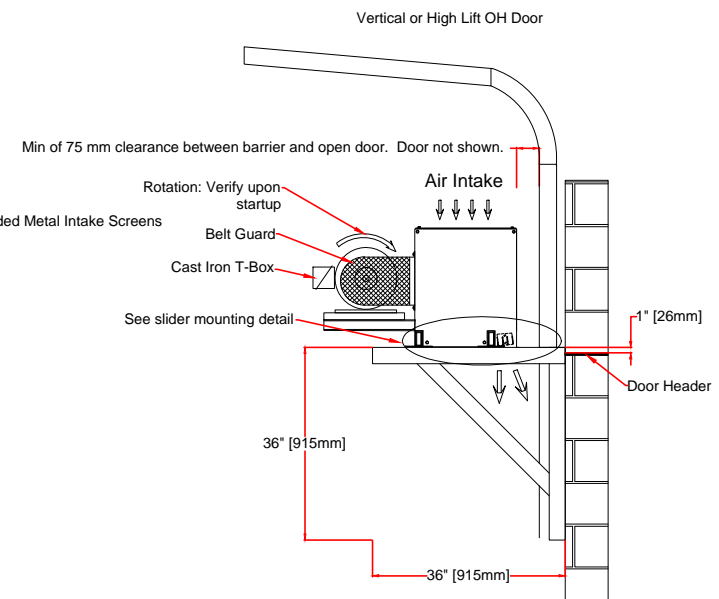
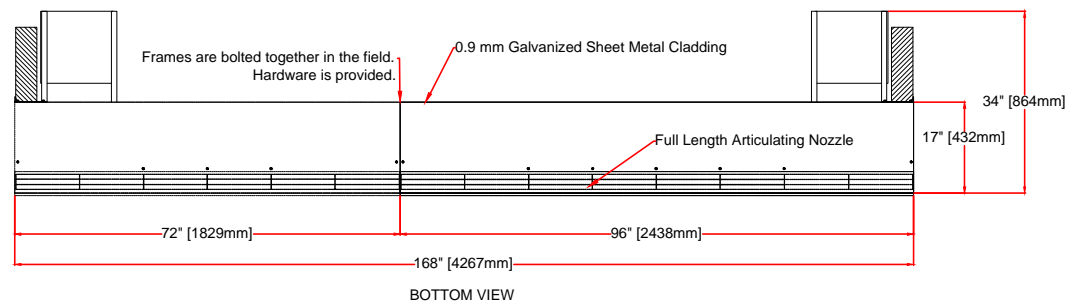
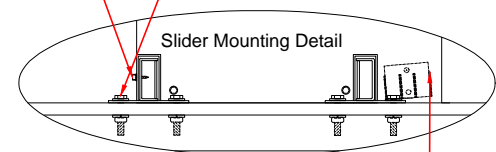


Extend slider to the wall mount & secure to the frame with 5.5 mm self drilling screw provided. Typical for both front sliders.



Field drill 13 mm holes into the wall mount and bolt sliders with the 12 mm hardware provided

5.5 mm Self Drilling Screw



Adjust the diffuser 5 degrees towards the exterior of the building. Confirm diffuser adjustment after power has been supplied to the Air Barrier. See owners manual.

<b>ENERSHIELD EUROPE</b> Calderhead Road Shotts Lanarkshire Scotland Tel.+44(0)1501 826501 FAX+44(0)1501 826501 E-mail: enquiries@enershield.eu www.enershield.eu	<b>DURASHIELD-HD AIR CURTAIN</b>		DURASHIELD-HD	DSH-168	
	Voltage 400/690V/3/ 50Hz		<b>Blowers</b>	Air Velocity (fpm) (m/s)	5500/27.9
	Motor(s) 2 @ 4 Kw, 1440 RPM, IE2, IP55, VFD Compatible 8.12/4.71 amp per motor 16.24/9.42 Amp Total		<b>7</b>	Air Volume (cfm) (l/s)	22,575/10,654
				Total Kw/watts	8 kw/8000W
			Weight lbs/Kg	924 lbs/420 Kg	